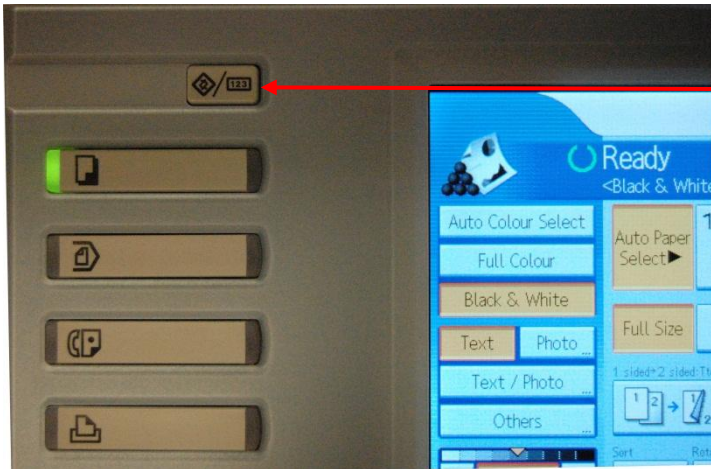


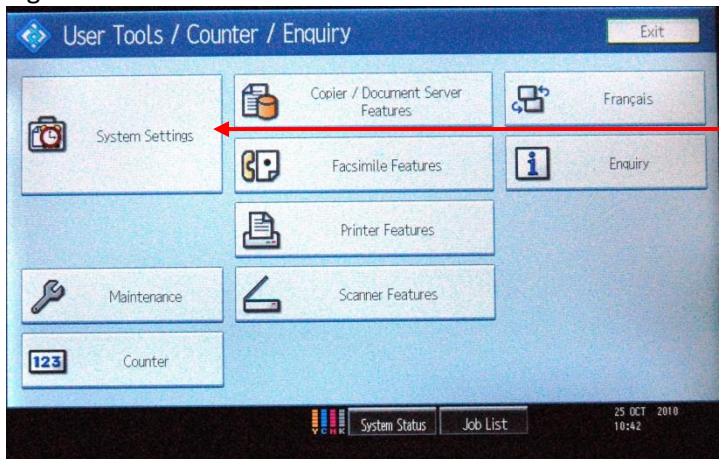
# Fax Destination

[This guide is taken from a MPC2050 Colour M/c – variations across ranges will occur]



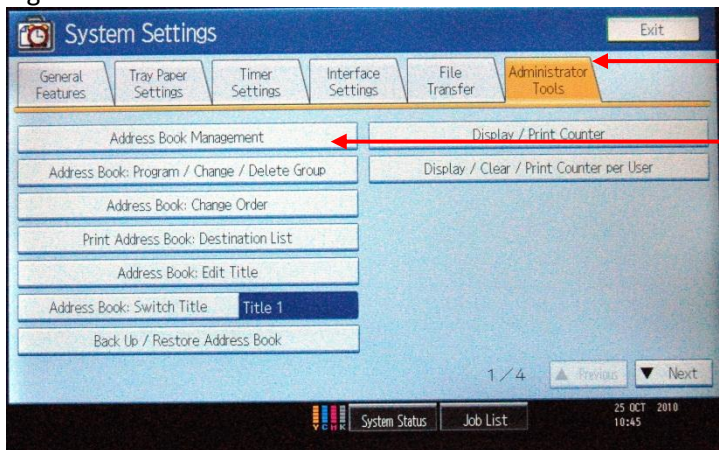
Press the "User Tools" Key

Fig: 1



Touch the "System Settings" Key

Fig: 2



Touch the "Administrator Tools" tab

Select "Address Book Management"

Fig: 3

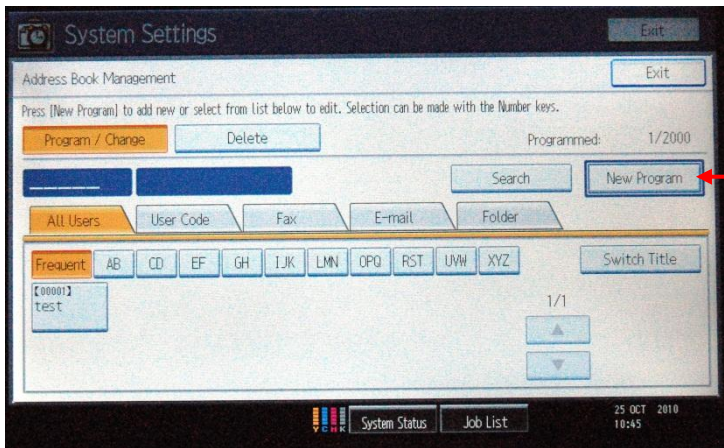


Fig: 4

Select "New Program"

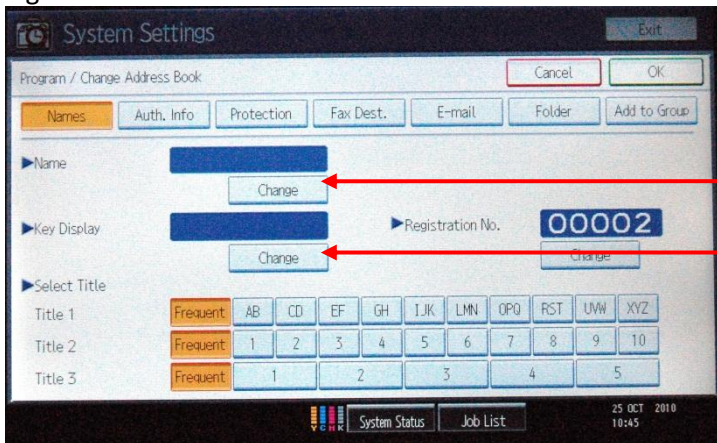


Fig: 5

Select "change" and enter name of "person's" destination Fax Number

"Key Display" is replicated from the above step but can be changed. This is the Name you see on the Copier's Display when Faxing.

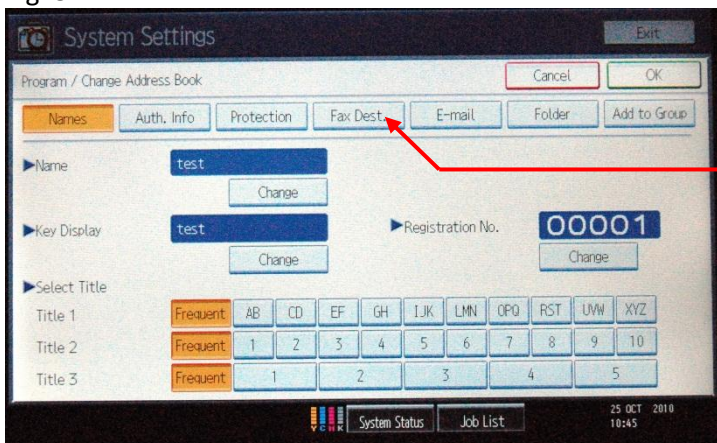


Fig: 6

Select "Fax Dest."

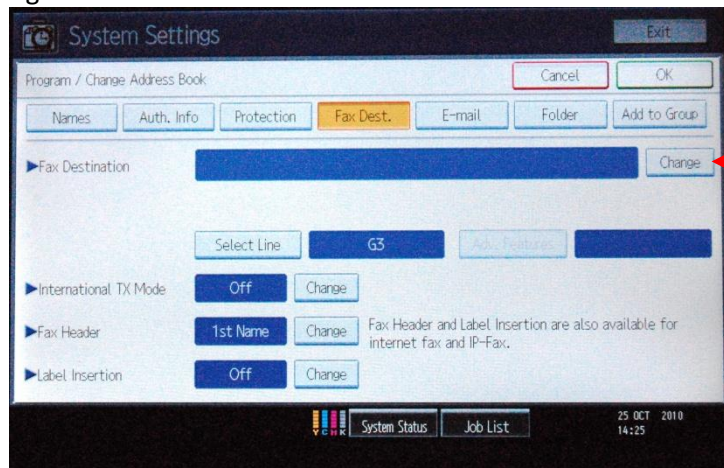


Fig: 7

Select "change" input Destination Fax Number, then OK and then OK at top of screen