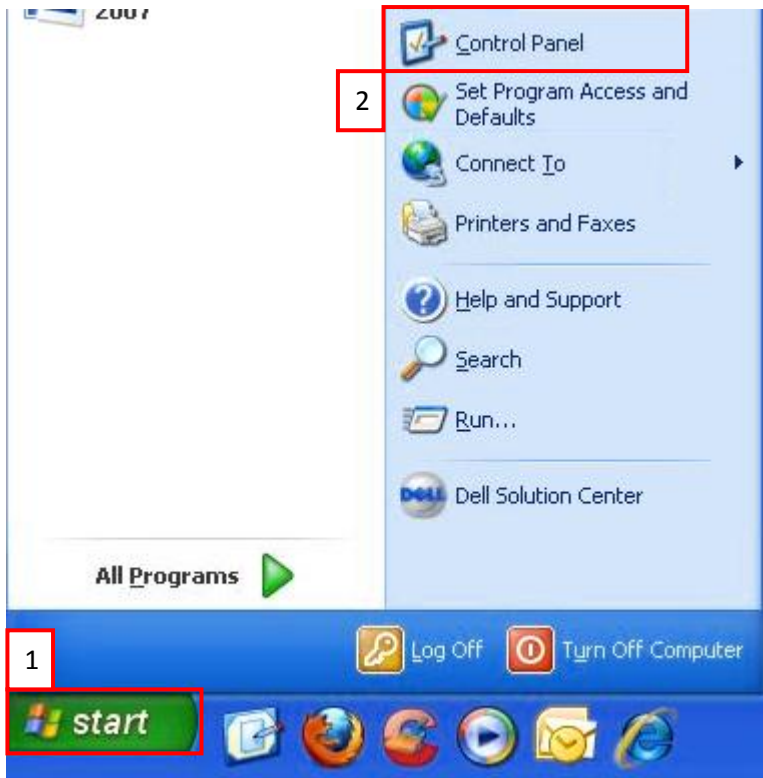


# XP Windows Firewall – Allow Connection.

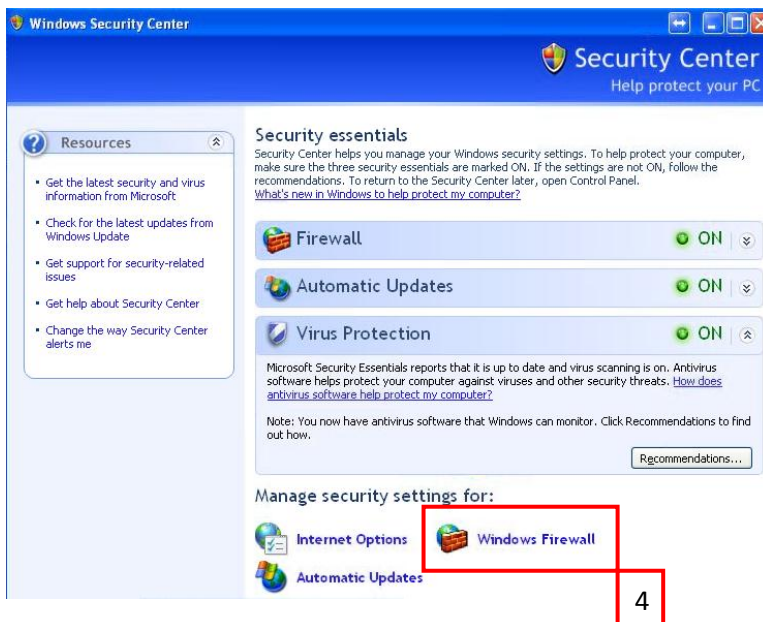
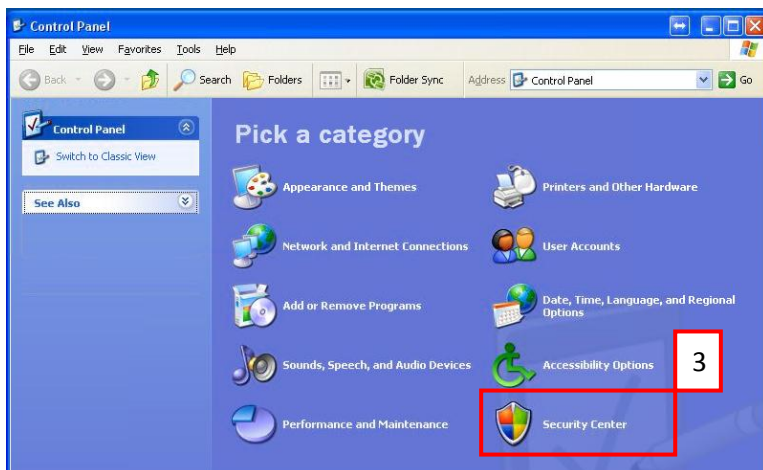


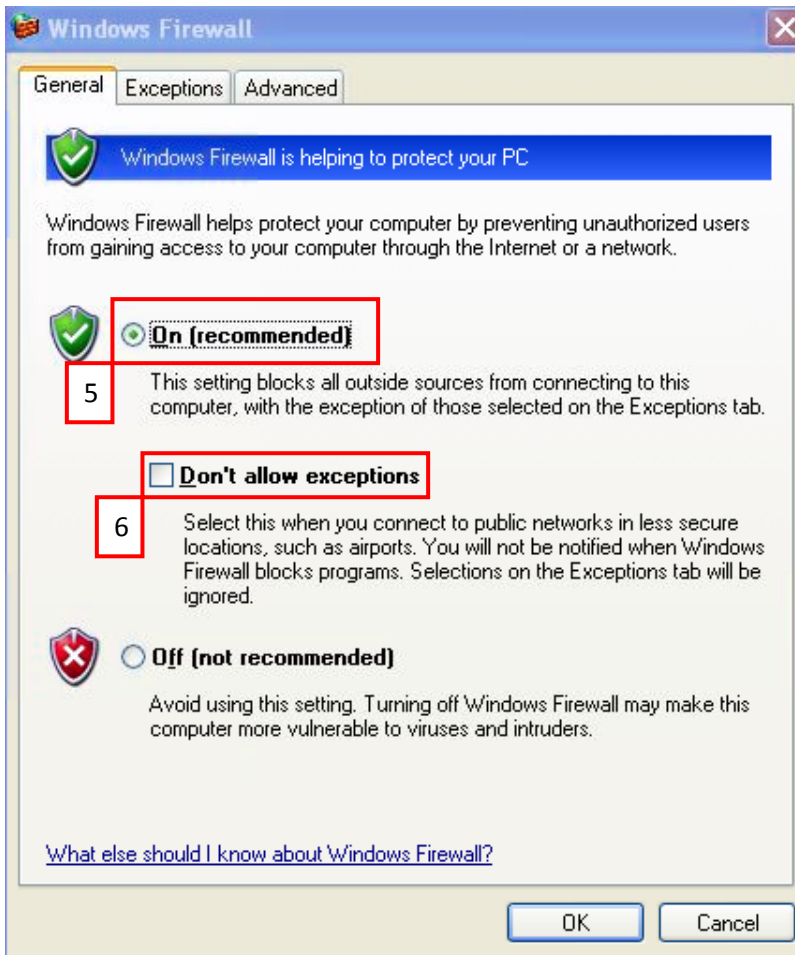
1 – Click on Start

2 – Click on Control Panel

3 – Click on Security Centre

4 – Click on Windows Firewall





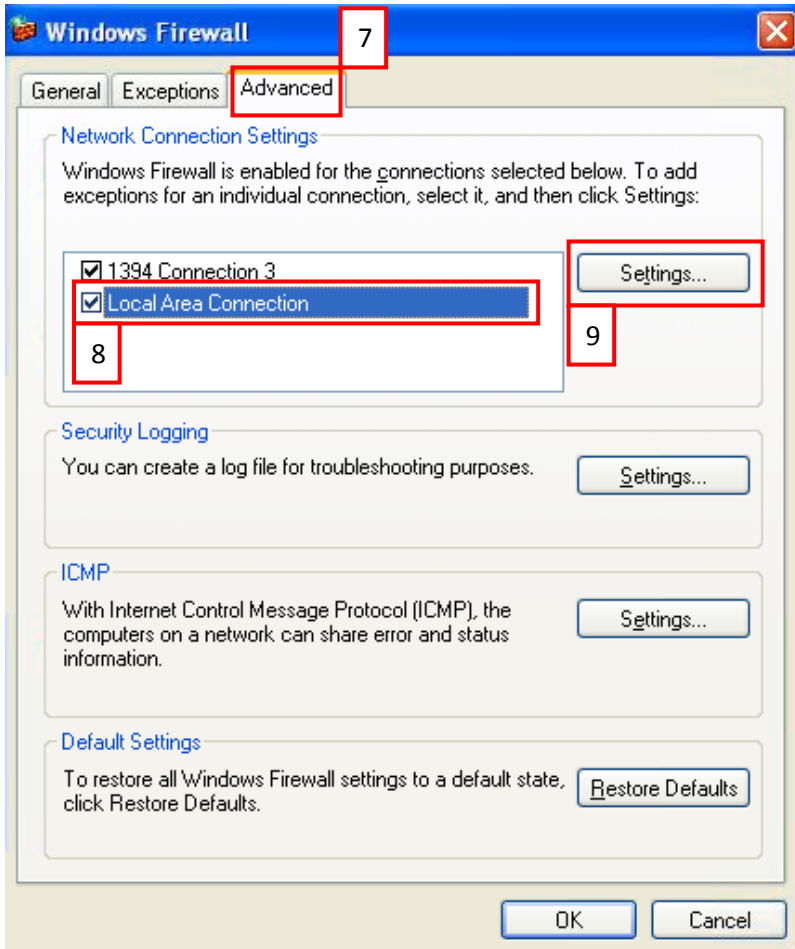
5 – This should be ON

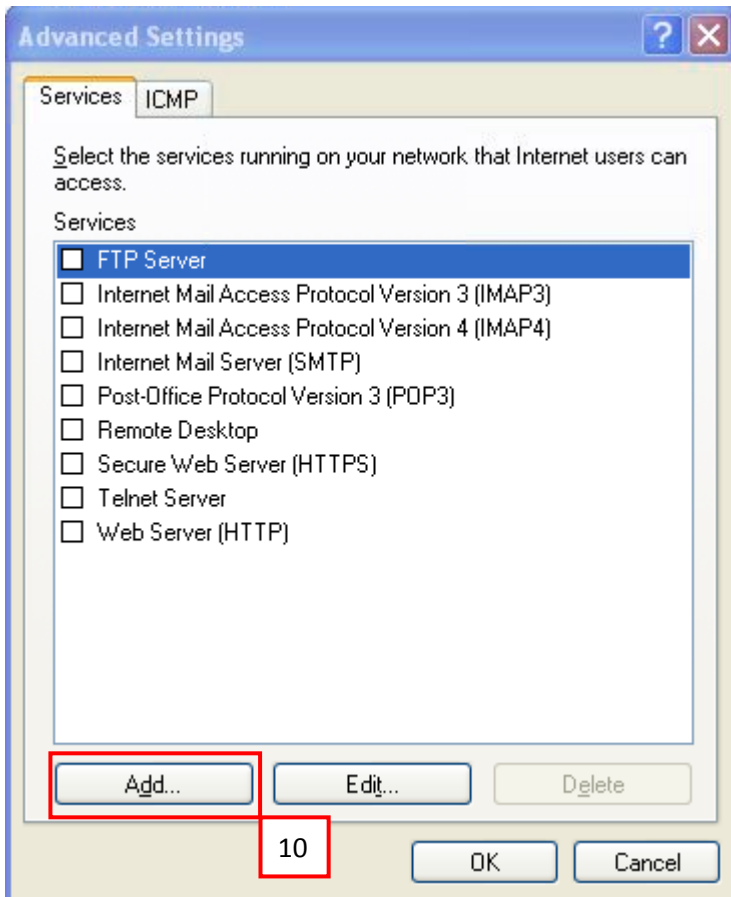
6 – This should NOT be selected

7 – Click on Advanced

8 – Highlight Local Area Connection

9 – Click on Settings





10 – Click on ADD

11 – Select a Name for this Service

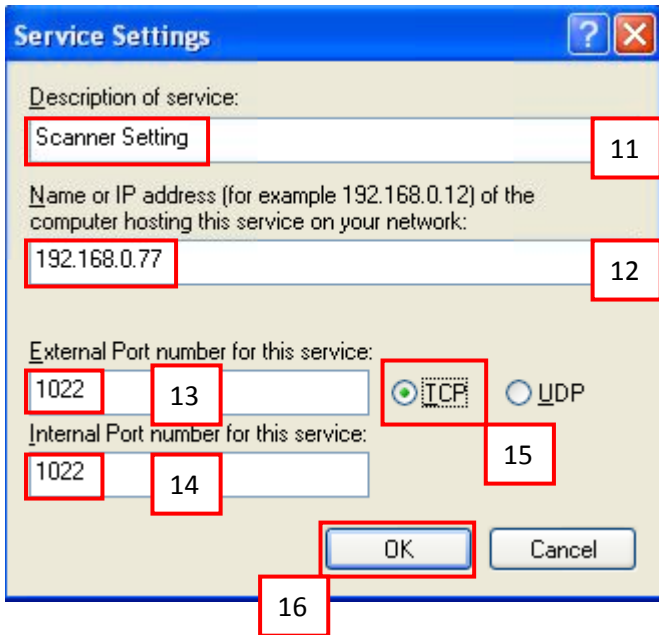
12 – Input the IP Address of the Printer

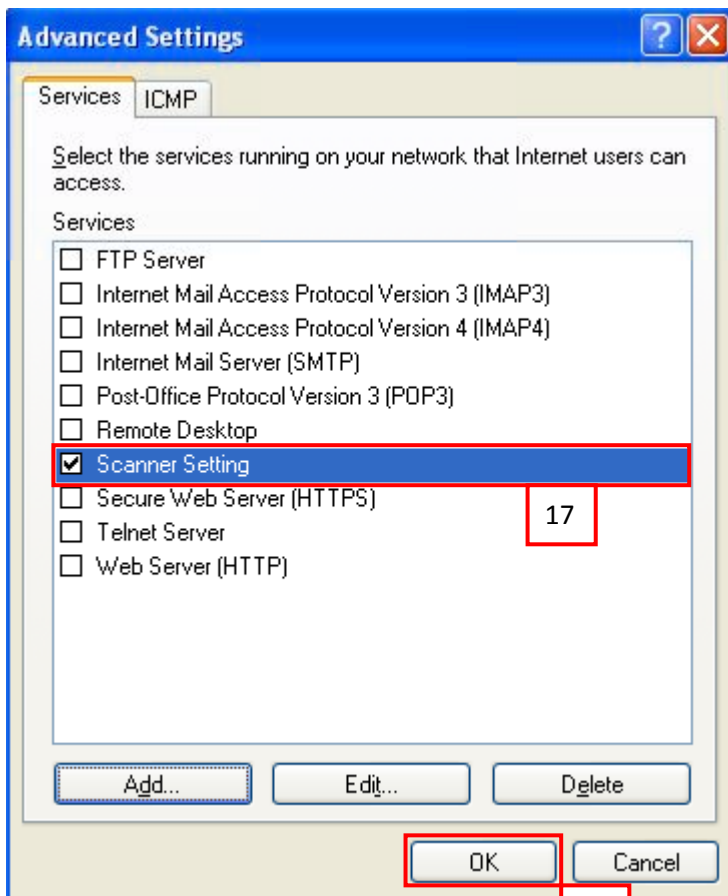
13 – Input external port No: 1022

14 – Input internal port No: 1022

15 – TCP needs to be selected

16 – Click OK

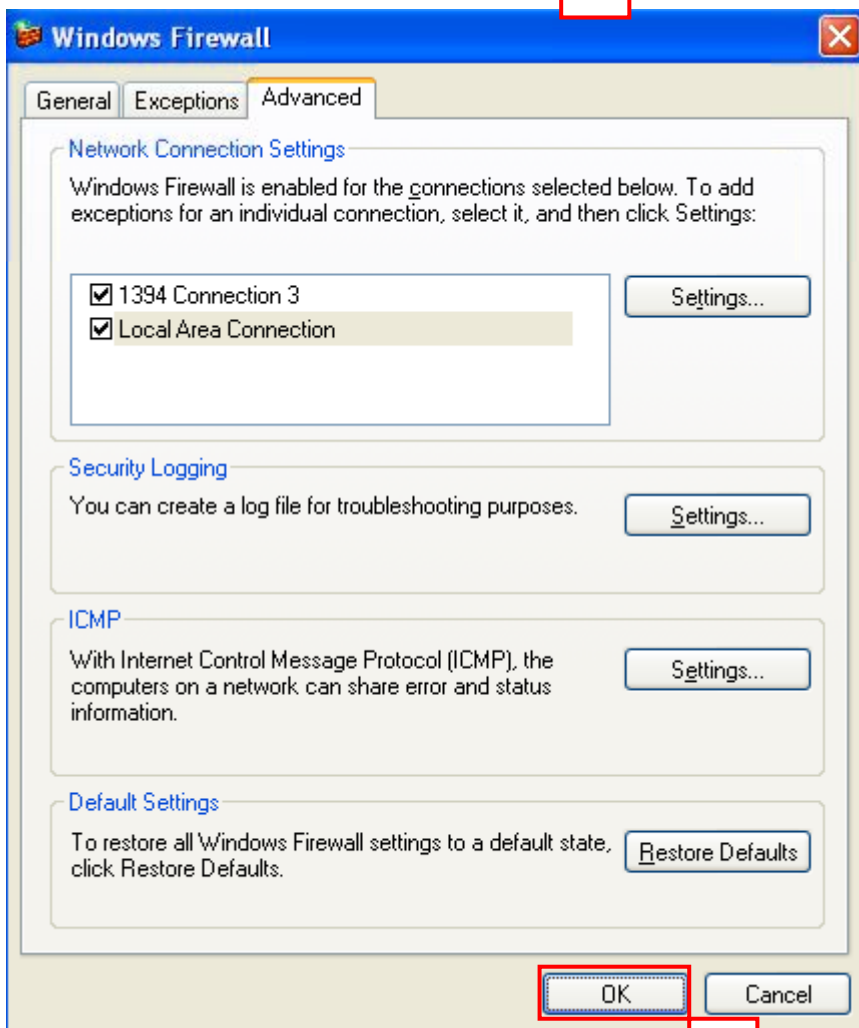




17 – New Service name should be listed

18 – Click on OK

19 – Click on OK



19