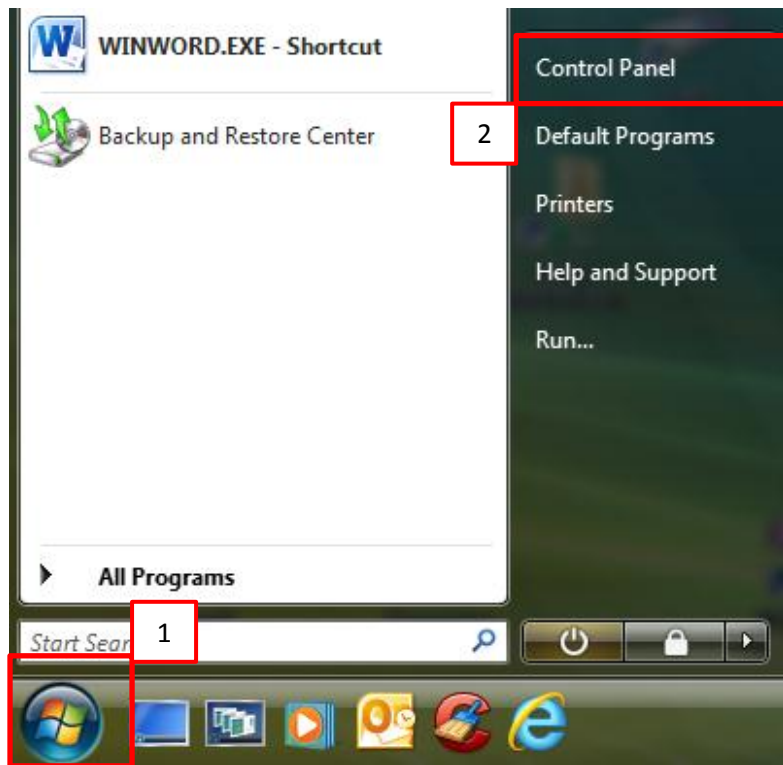


Windows Vista Firewall – Allow Connection

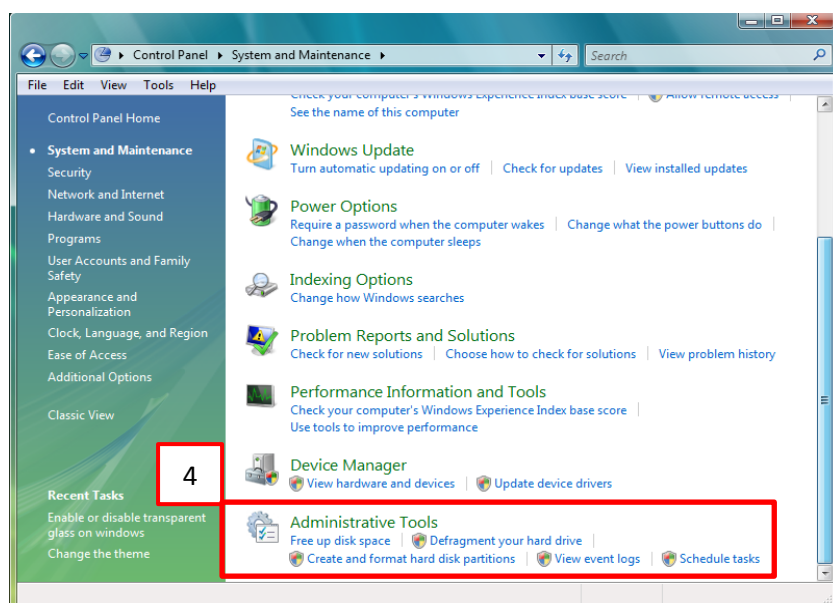
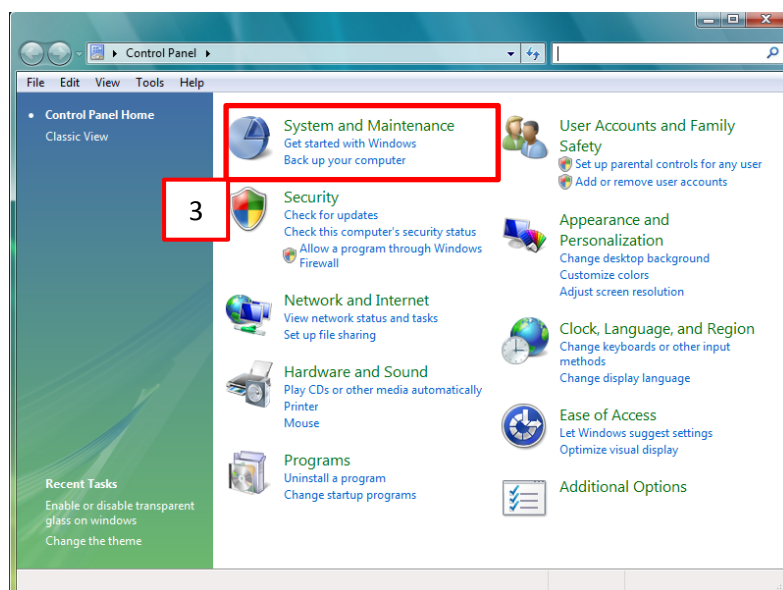


1 – Click on Start

2 – Click on Control Panel

3 – Click on System and Maintenance

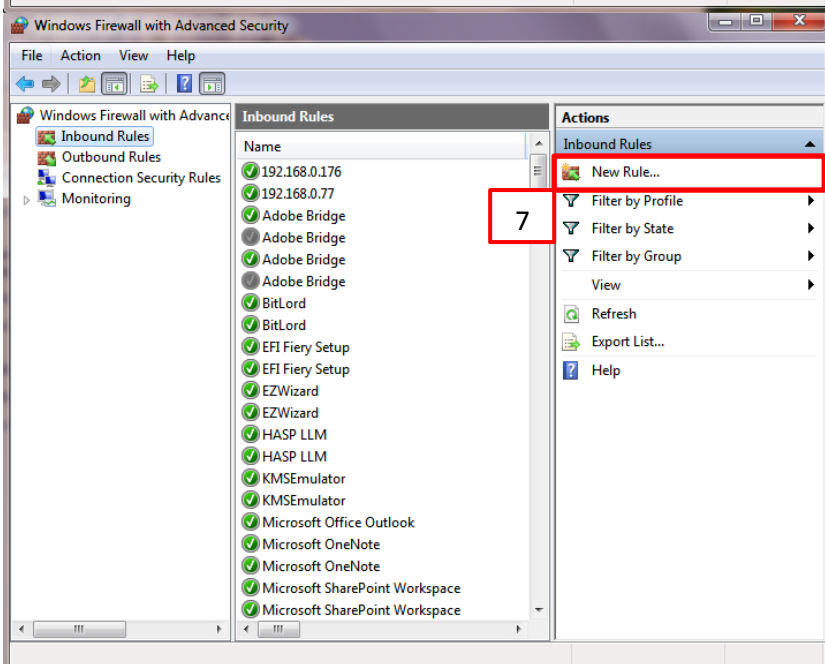
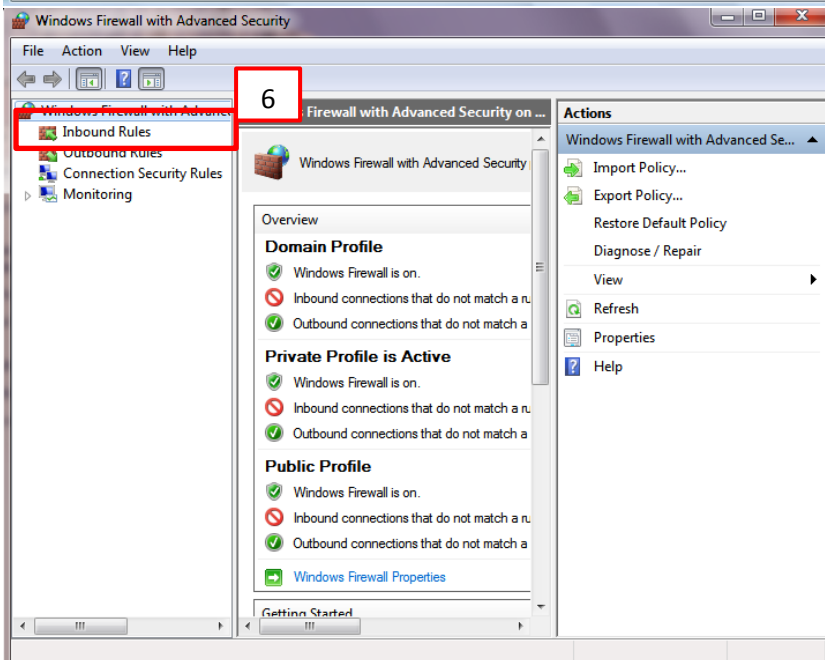
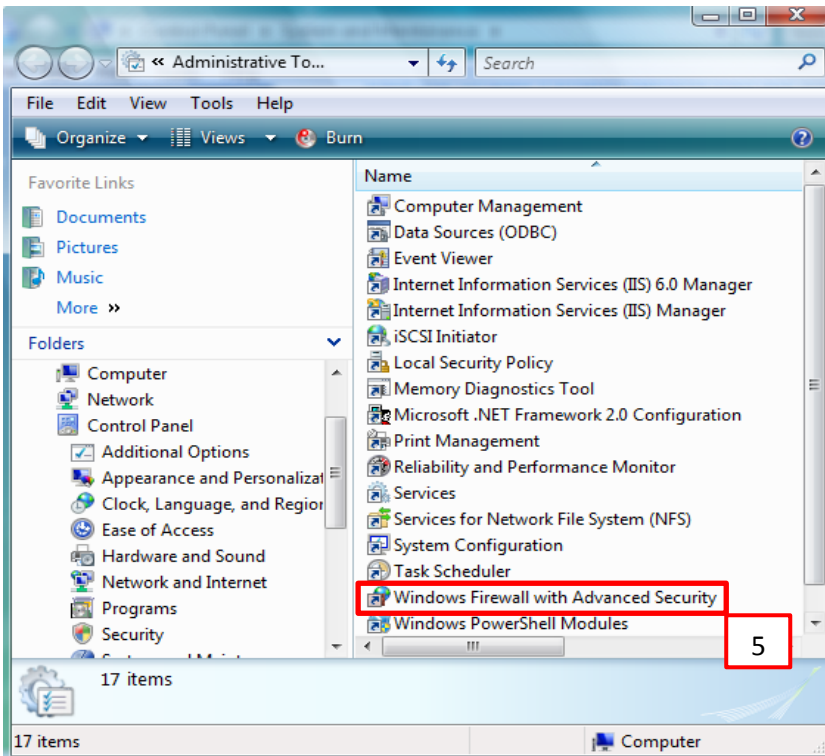
4 – Click on Administrative Tools

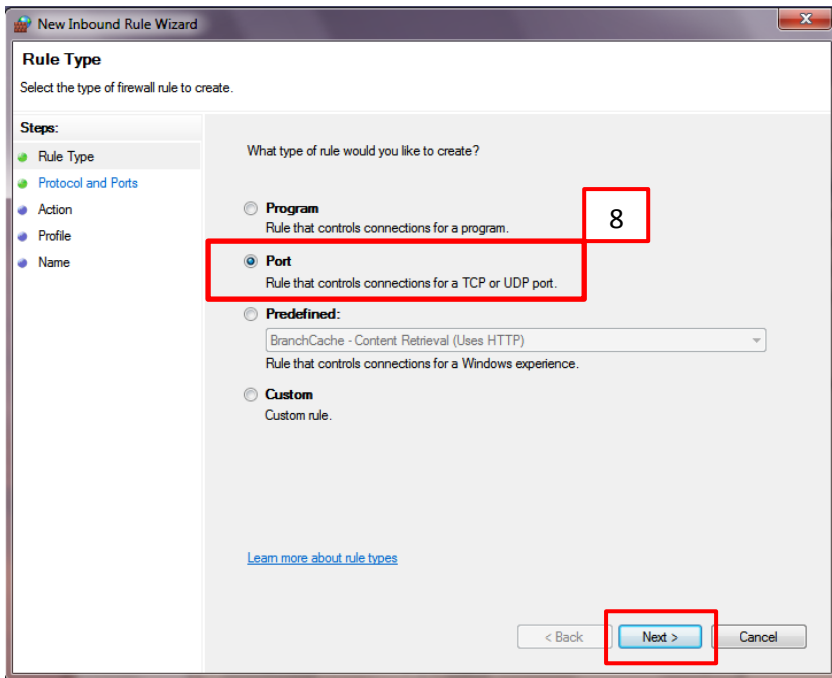


5 – Click on Windows Firewall with Advanced Security

6 – Click on Inbound Rules

7 – Click on New Rule...





8 – Click on Port

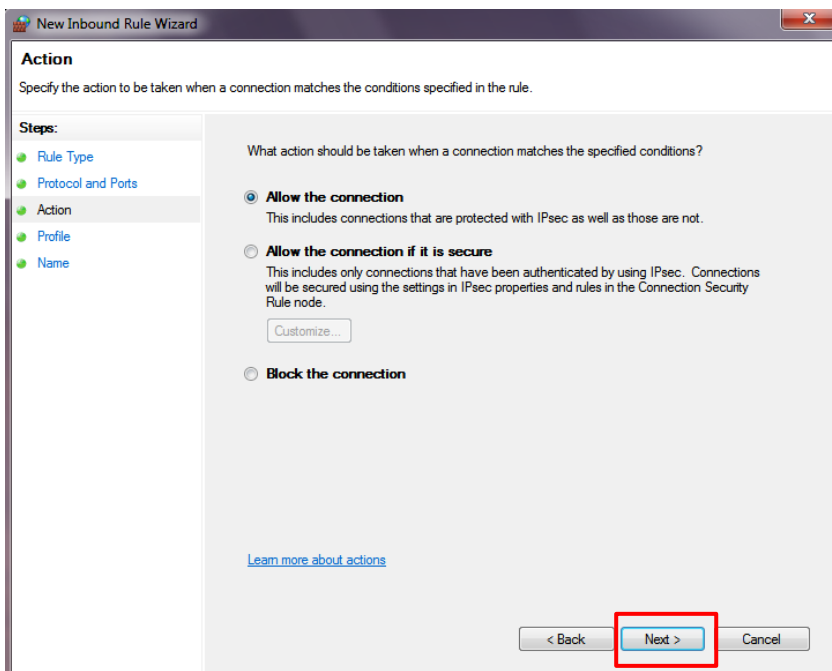
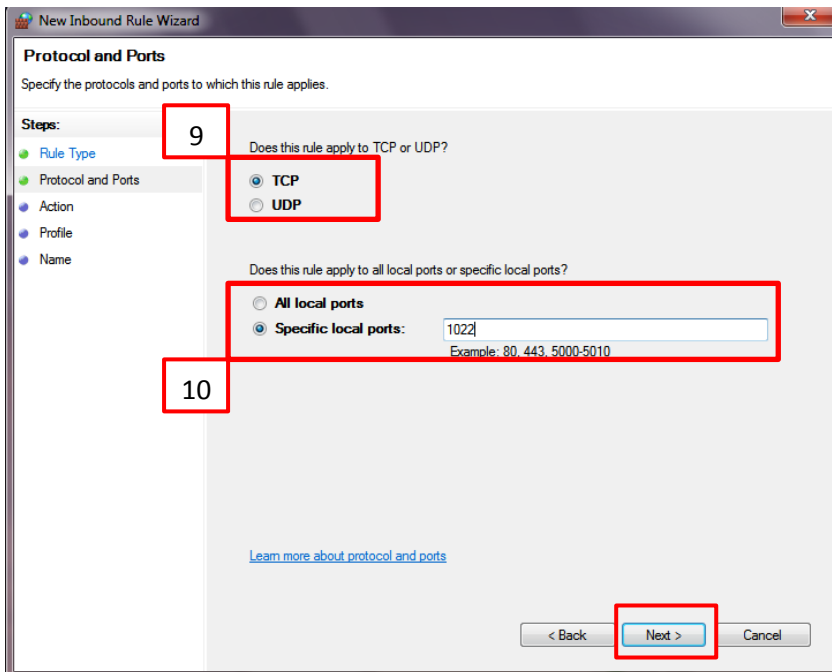
Next

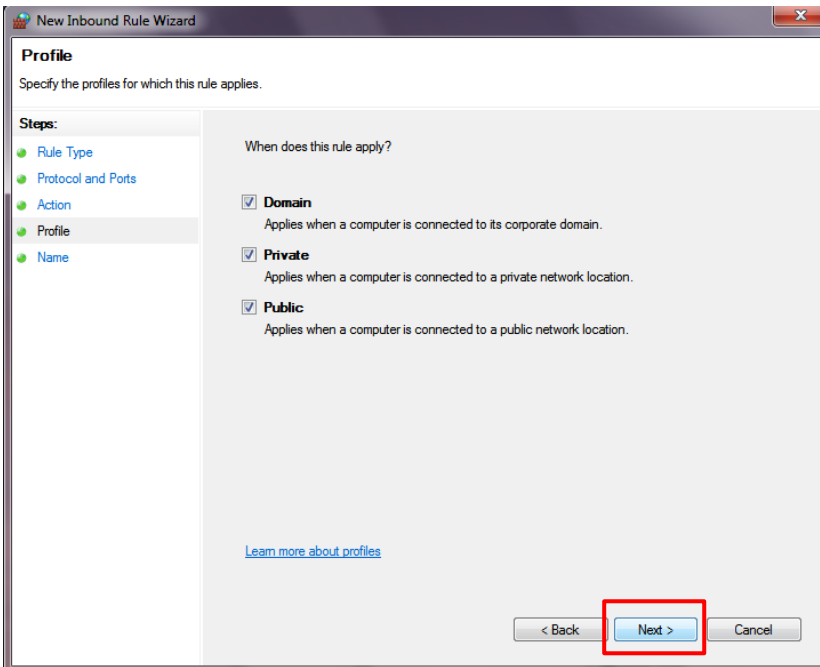
9 – TCP needs to be selected

10 – Specific Local Ports – 1022

Next

Next





Next

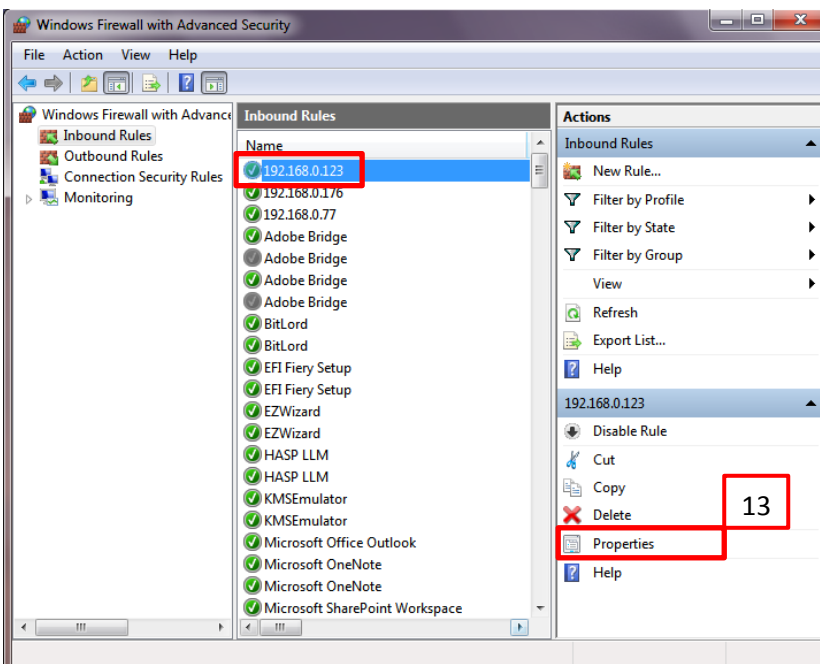
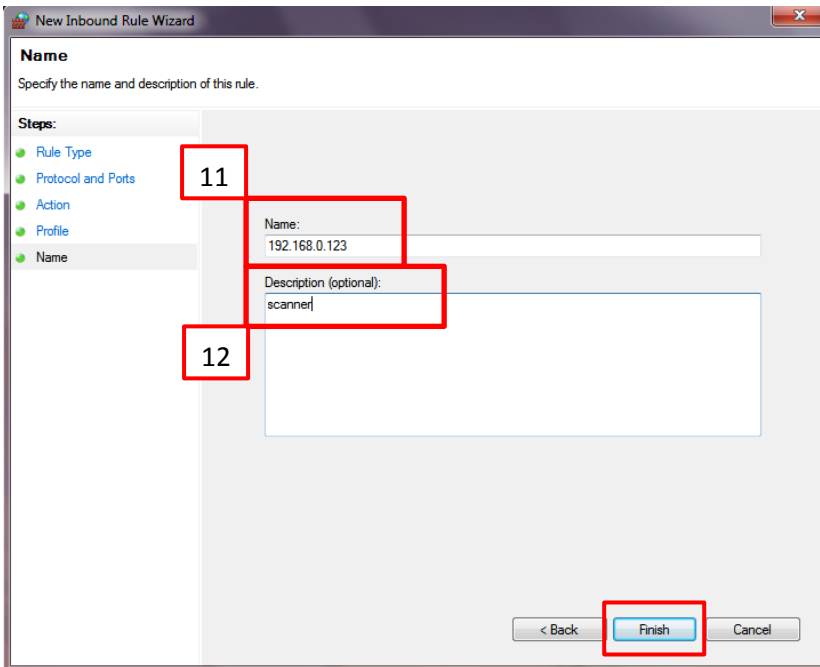
11 – Name: IP address of Printer

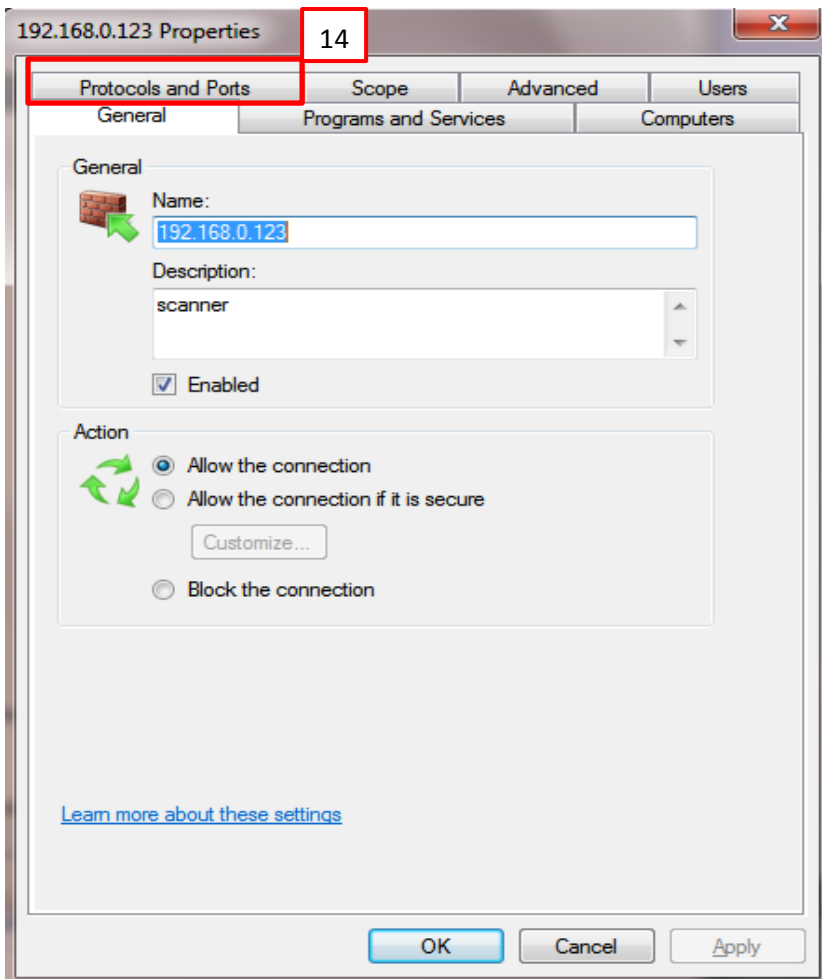
12 – Give the service a Name

Finish

Select Inbound Rule

13 – Click on Properties





14 – Click on Protocols and Ports Tab

15 – Remote Port,
Select specific Ports on the drop down,
enter 1022

Apply

OK

