

Mac Print Driver Set Up

[A POSTSCRIPT CARD OPTION MUST BE INSTALLED]

1. Click the Apple Icon
2. Select About This Mac
3. Mac Version is Displayed – use this when selecting the correct Driver



4. Using the Web browser – www.bcmgroup.co.uk
5. Select Drivers & Manuals
6. Click on the Link to – www.ricoh-support.com
7. From the Drop down box select Product [ex. mpc3000]
8. Click Fast Find

The screenshot shows a web browser window with the address bar containing <http://www.bcmgroup.co.uk/Drivers.php>. The page header includes the BCM logo and the tagline "The Committed Copier Company". A navigation menu on the left lists several options, with "Drivers & Manuals" highlighted. The main content area features a section titled "Drivers and Operation Manual Downloads" with a sub-header "Please click on the link to the Ricoh UK web site for all the latest drivers, utilities and...". Below this is an image of a blue USB cable and a link to www.ricoh-support.com. A disclaimer at the bottom states that the files are hosted on an external server.

The screenshot displays the Ricoh Support Europe website. The navigation bar includes "Home", "Support", "Downloads", and "Ricoh-Europe.com". A search bar is visible with the text "Quick Search" and a dropdown menu set to "Office Equipment : Multi Functional Products". The selected product in the dropdown is "Aficio MP C3000". A "Fast Find!" button is located to the right of the dropdown. Below the search bar, the "Ricoh Knowledge Base" section is visible, with the text "Find solutions to your queries using the online Knowledge base. It's easy to use, fast and available 24 hours a day, everyday" and a link to "Search for answers by model".

9. Select the Correct Mac OS [ex. 10.5]

Aficio MP C2000/C2500/C3000

[Sign up : Software Release Notifications](#)

Important Notice:

- ▶ [For IE 7 users](#)
- ▶ [For Windows 2000 users](#)
- ▶ [About PS Driver for Mobile Printing](#)

Choose a driver language from the drop down list.

English

Choose your Operating System:

- ▶ [Microsoft Windows Server 2008](#)
- ▶ [Microsoft Windows Server 2008 R2 \(x64\)](#)
- ▶ [Microsoft Windows Server 2008 \(x64\)](#)
- ▶ [Microsoft Windows Server 2003](#)
- ▶ [Microsoft Windows Server 2003 x64 Edition](#)
- ▶ [Microsoft Windows 7](#)
- ▶ [Microsoft Windows 7 \(x64\)](#)
- ▶ [Microsoft Windows Vista](#)
- ▶ [Microsoft Windows Vista \(x64\)](#)
- ▶ [Microsoft Windows XP](#)
- ▶ [Microsoft Windows XP x64 Edition](#)
- ▶ [Mac OS X 10.7](#)
- ▶ [Mac OS X 10.6](#)
- ▶ [Mac OS X 10.5](#)
- ▶ [Mac OS X 10.1-10.4](#)
- ▶ [Mac OS](#)

10. Click the Link - Download File From External Website
11. Select the PPD Installer download arrow
12. The PPD Installer package will Open

[Privacy Statement](#)

[Read Privacy Statement](#)

Data Type: Drivers and Software
 Model: Aficio MP C3000 (Multi Functional Products)
[Download file from external website](#)

The selected file(s) / document(s) do not reside on the [www.ricoh-solutions.com](#) server. You are being forwarded to an external website. Ricoh Europe PLC is not responsible for the file(s) / document(s) on the external website. Any personal data collected on the external website is not covered by the Ricoh Europe Privacy Statement.

[Read Privacy Statement](#)

[↑ To top](#)

[↑ To Top](#)

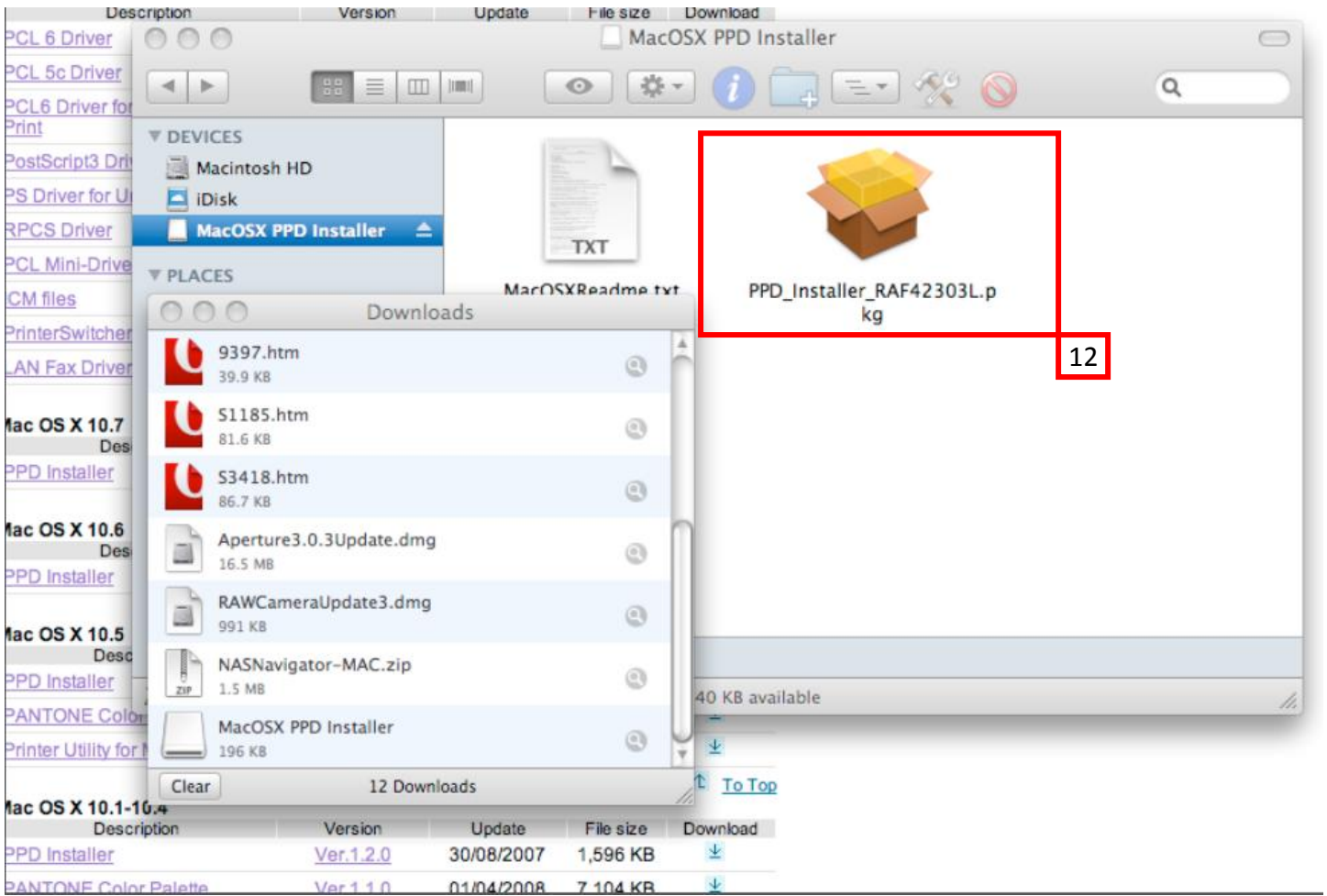
Mac OS X 10.5

Description	Version	Update	File size	Download
PPD Installer	Ver.1.0.0	25/03/2008	196 KB	↓
PANTONE Color Palette	Ver.1.1.0	01/04/2008	7,104 KB	↓
Printer Utility for Mac	Ver.2.2b9.01d17	11/01/2011	319 KB	↓

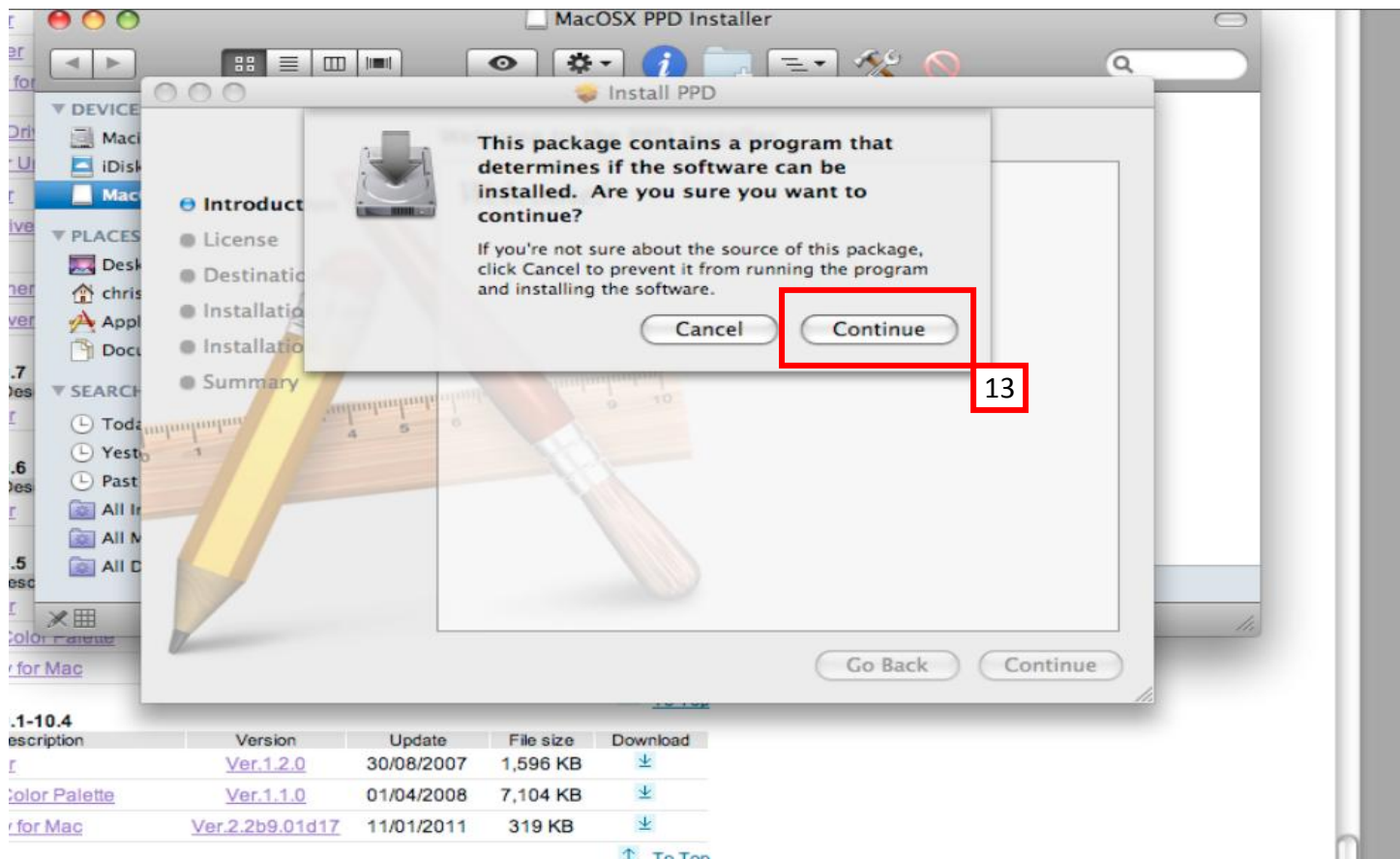
[↑ To Top](#)

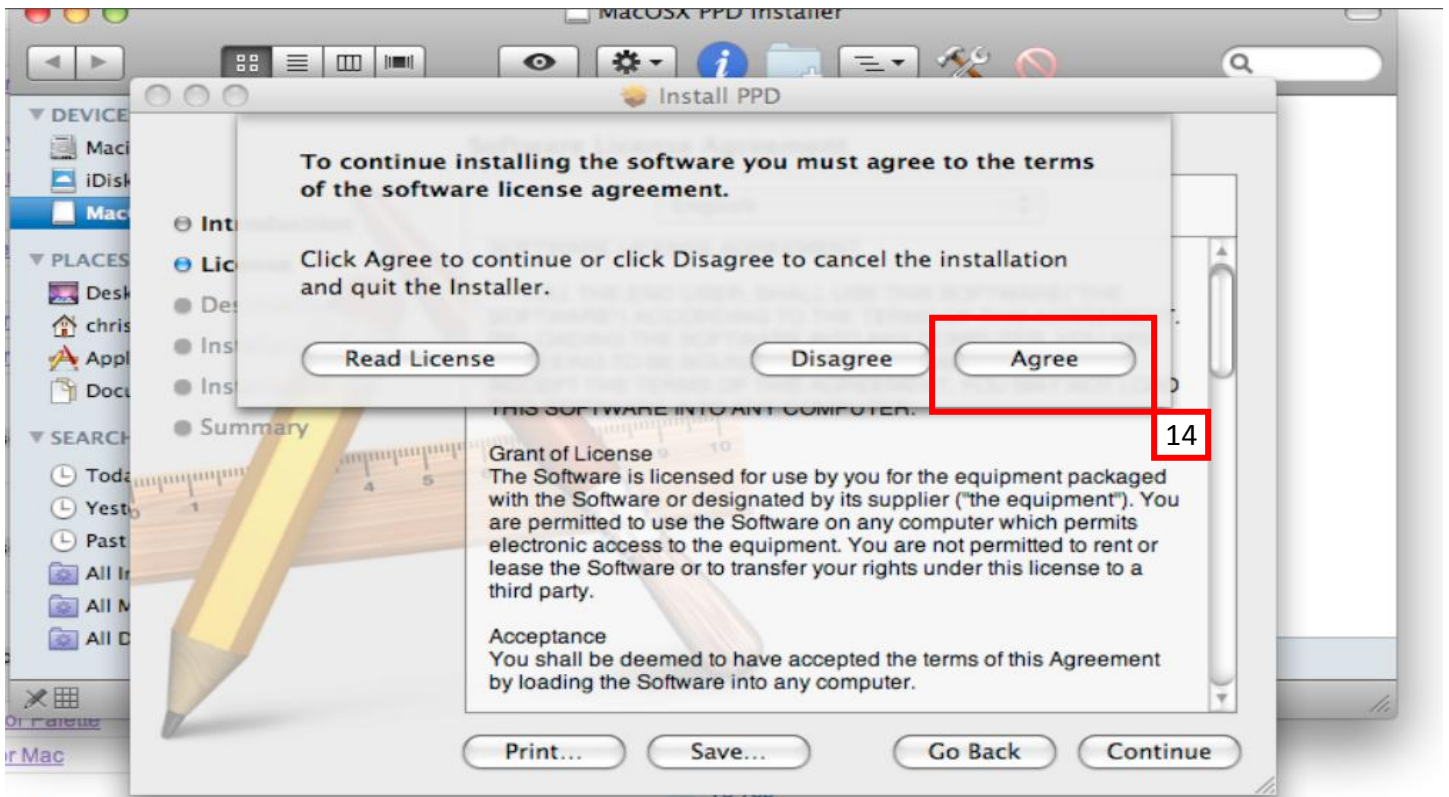
Mac OS X 10.1-10.4

Description	Version	Update	File size	Download
PPD Installer	Ver.1.2.0	30/08/2007	1,596 KB	↓



- 13. Select Continue
- 14. Select Agree
- 15. Select Continue





Description	Version	Update	File size	Download
Printer Palette	Ver.1.2.0	30/08/2007	1,596 KB	↓
Printer Palette	Ver.1.1.0	01/04/2008	7,104 KB	↓
Printer Palette for Mac	Ver.2.2b9.01d17	11/01/2011	319 KB	↓

[↑ To Top](#)

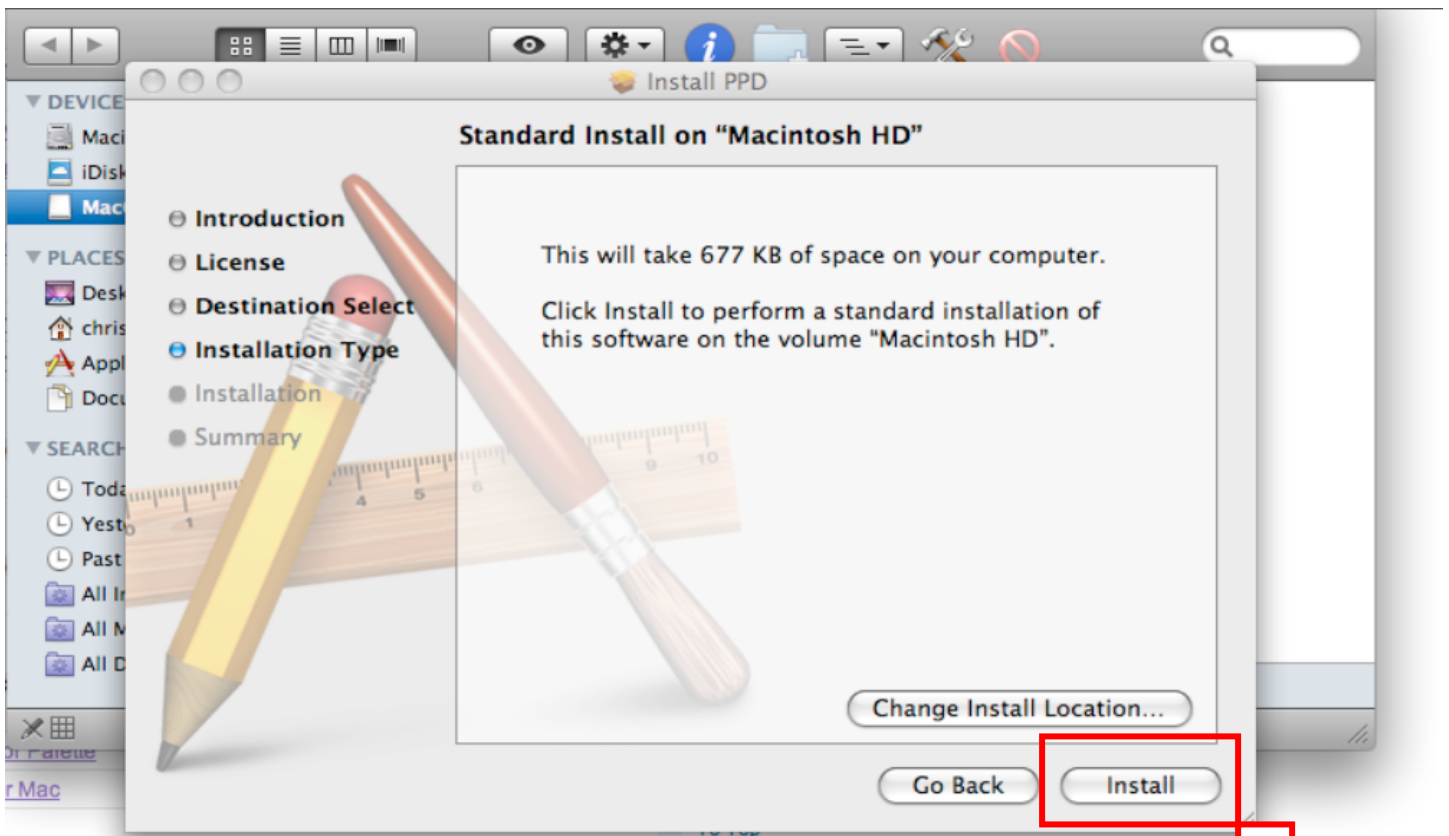
16. Select Continue

17. Select Install



Description	Version	Update	File size	Download
Printer Palette	Ver.1.2.0	30/08/2007	1,596 KB	↓

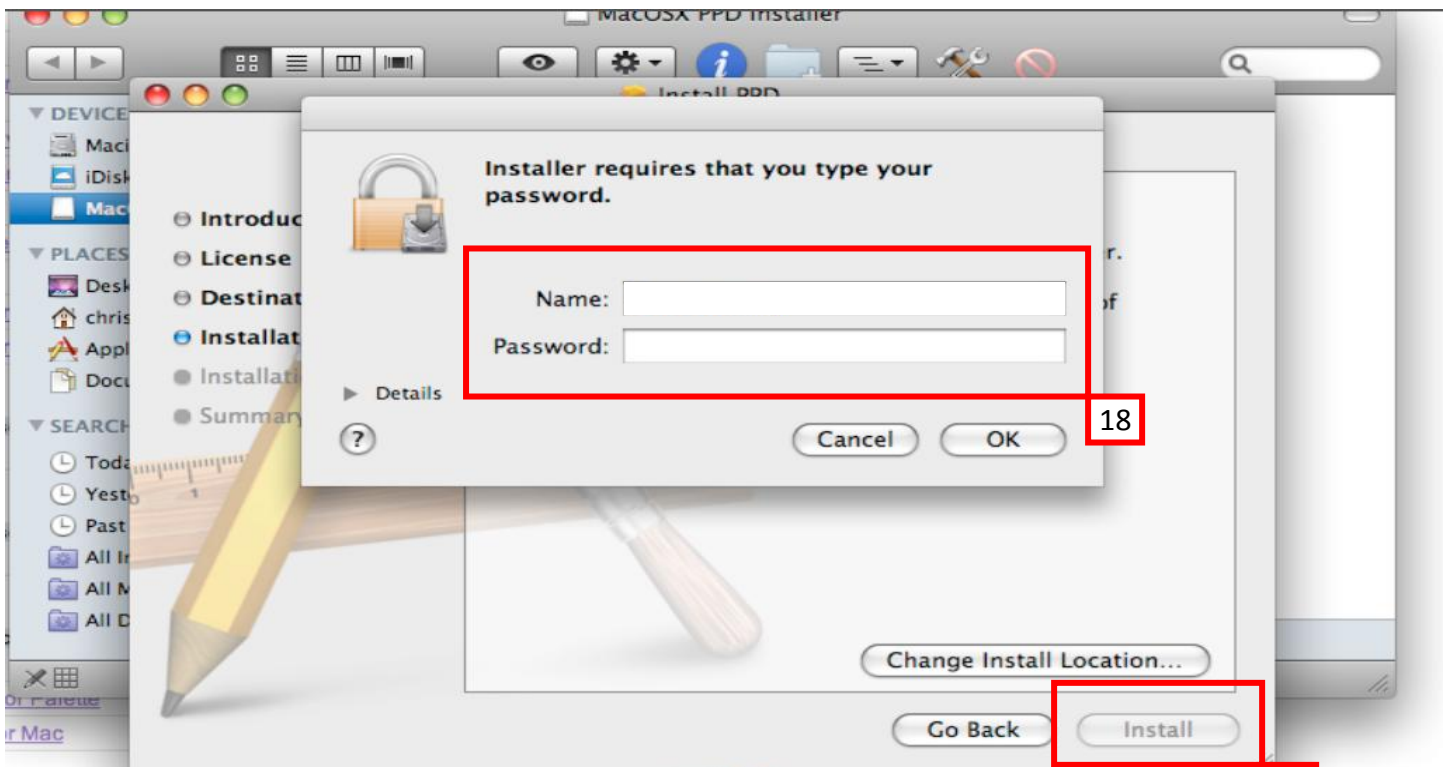
16



17

Description	Version	Update	File size	Download
	Ver.1.2.0	30/08/2007	1,596 KB	↓

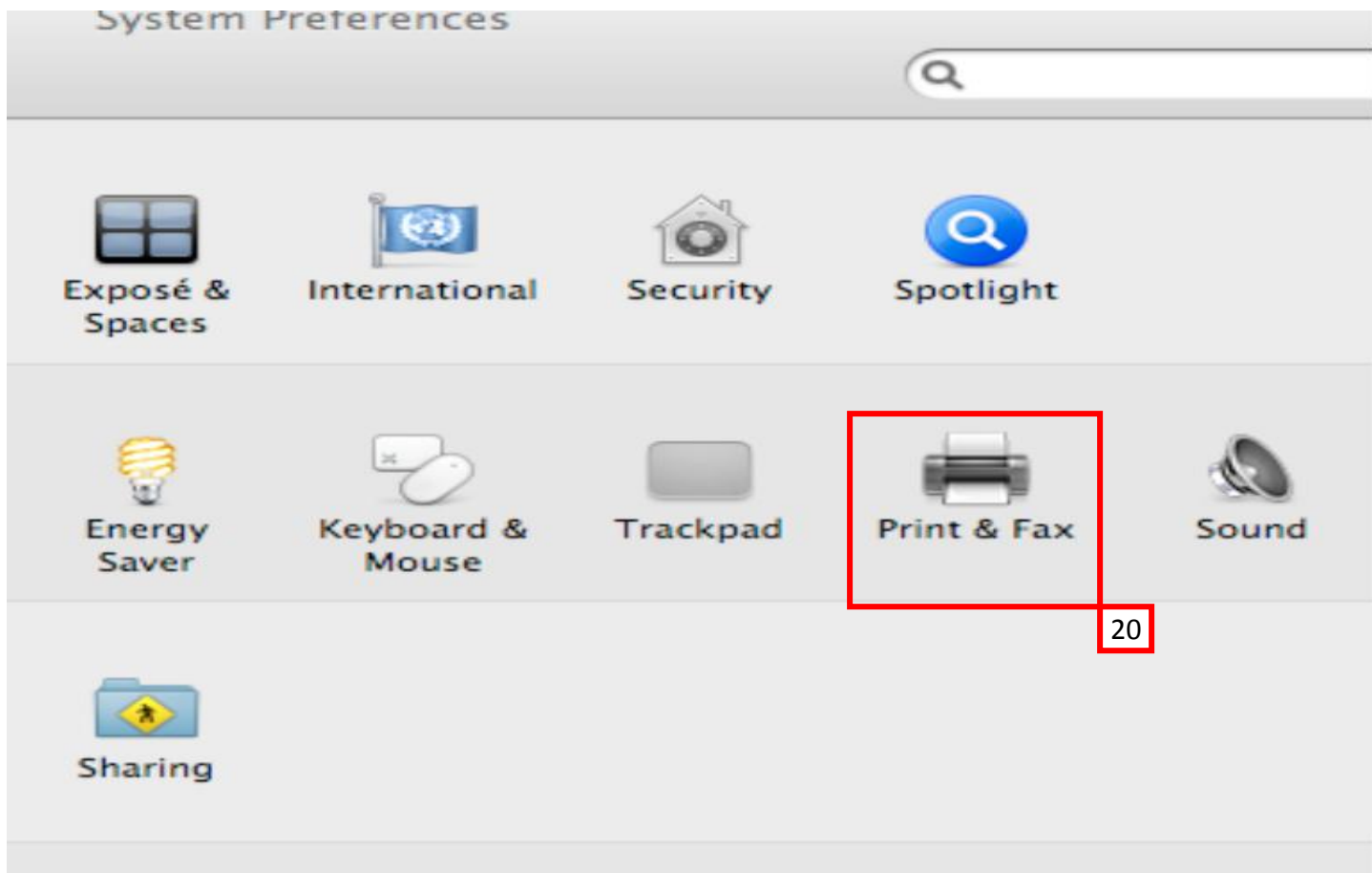
18. Enter the User Logon Name and Password at the Prompt
19. Click Install
20. In System Preferences Select Print



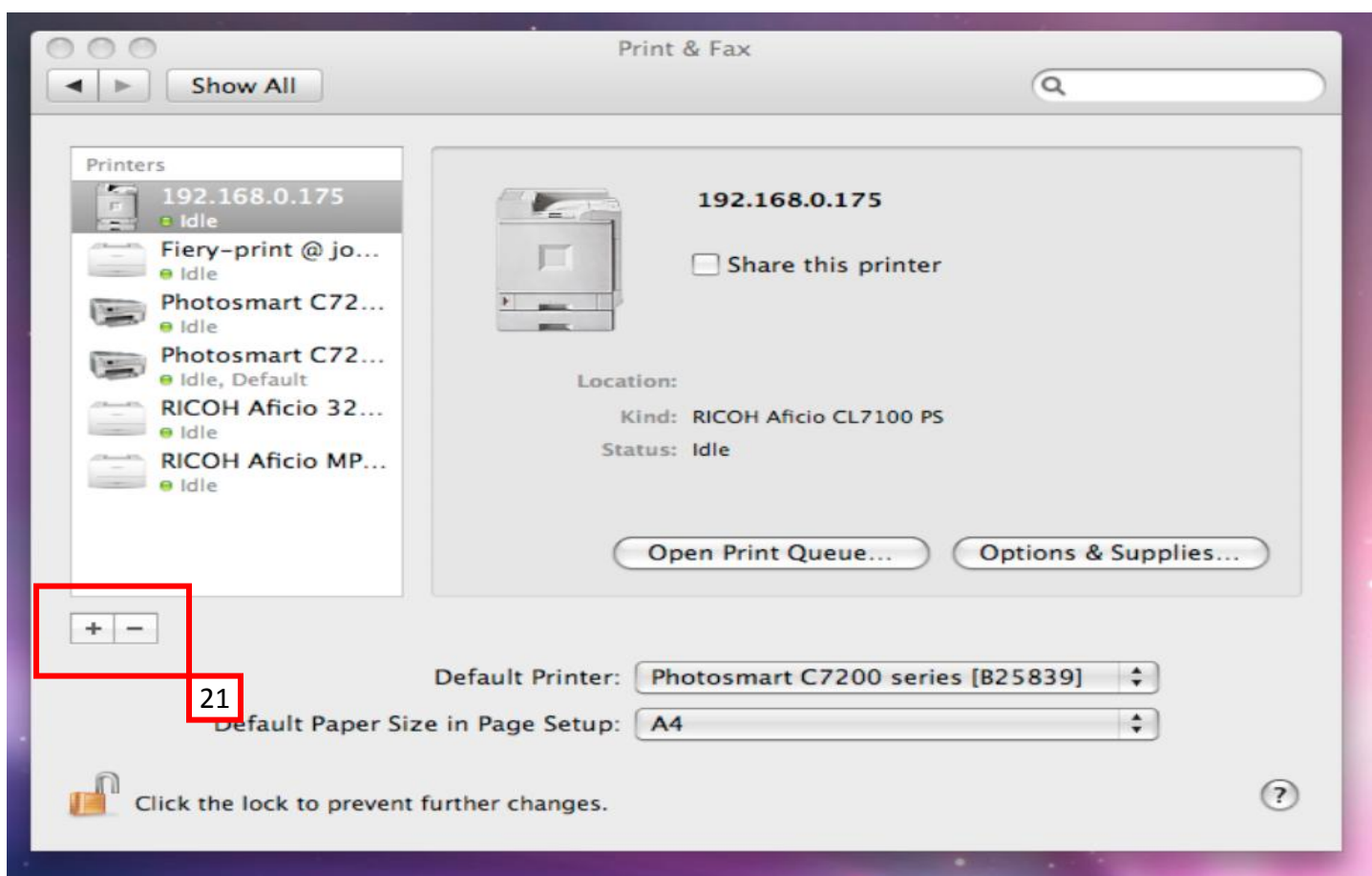
18

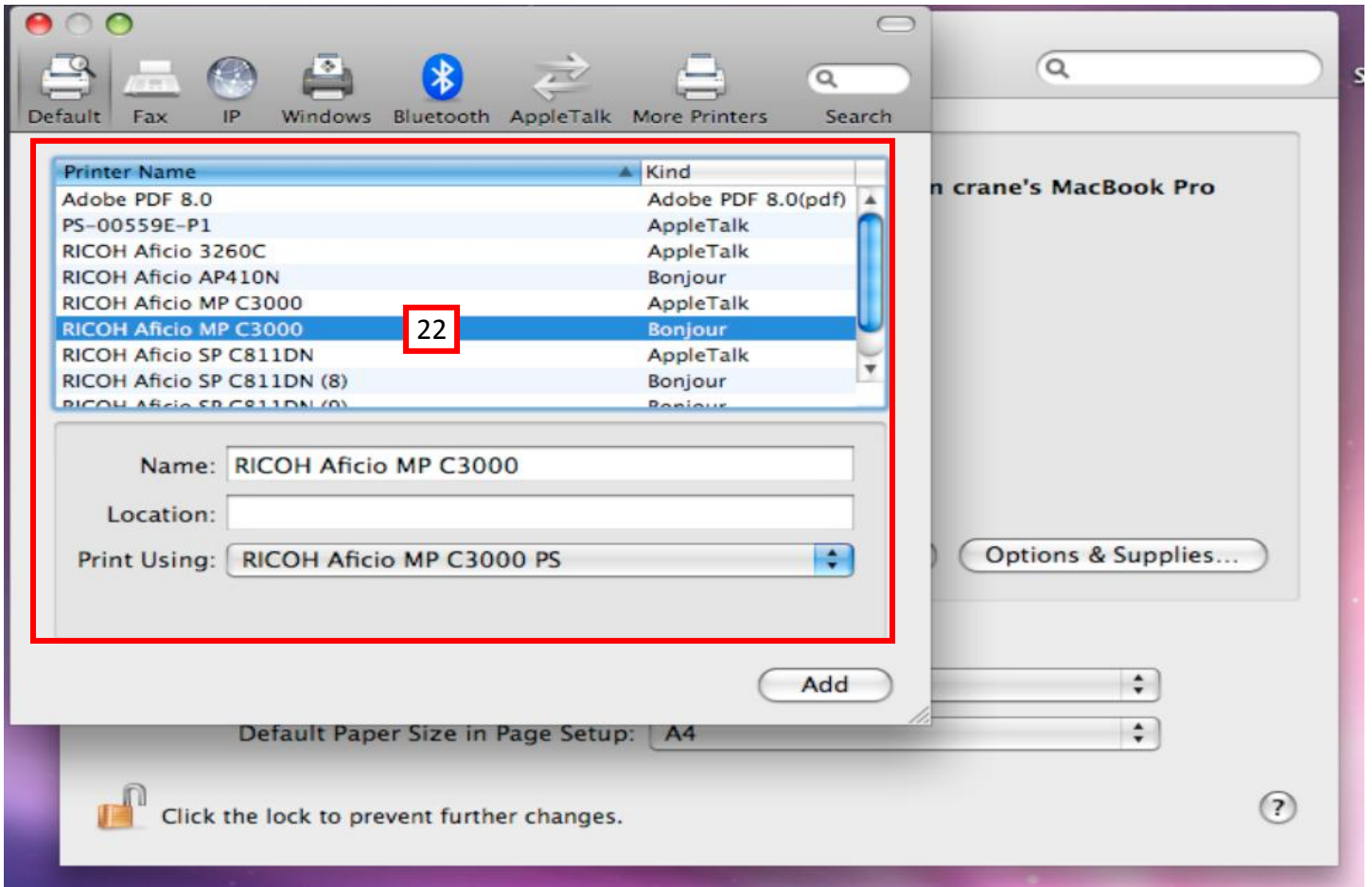
19

Description	Version	Update	File size	Download
	Ver.1.2.0	30/08/2007	1,596 KB	↓
or Palette	Ver.1.1.0	01/04/2008	7,104 KB	↓
r Mac	Ver.2.2b9.01d17	11/01/2011	319 KB	↓



21. Click on the + to add device
22. Select the Device from the list
Click on the Add





23. Install Succeeded Click Close

24. Check that the correct device is now selected as the default from the drop down arrow

